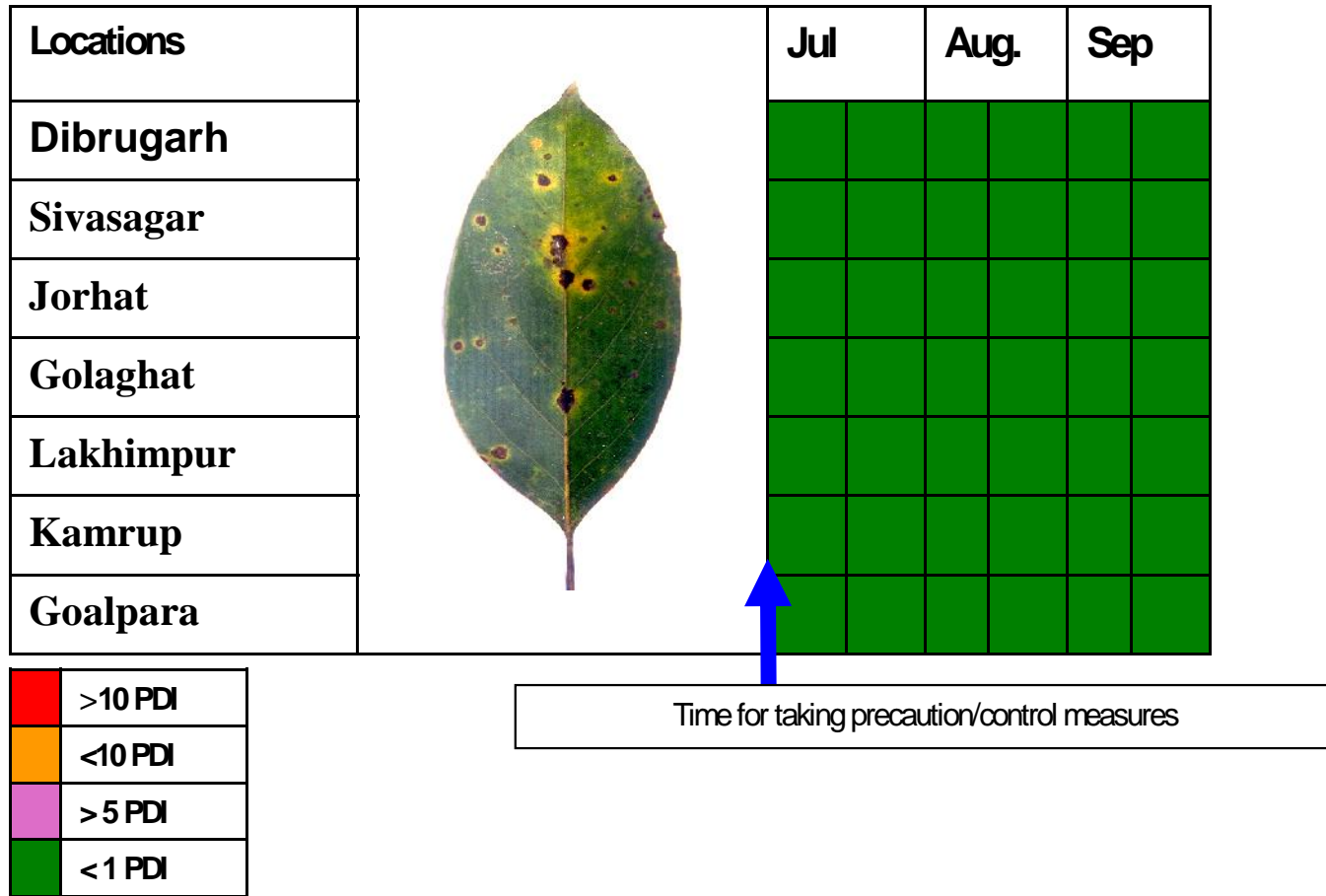


**Diseases occurrence in muga host plants  
and silkworms during the quarter  
(July-Sept., 2014)**

## Disease calendar for leaf spot disease




**CONTROL MEASURES:**

**Leaf spot disease:**

**Cultural method:** Regular cultural operations, pruning and pollarding.

**Chemical control:** Application of 0.1% Dithane M-45 (1gm/1lit.) twice at 15 days interval before the peak season

## Disease calendar for anthracnose of som disease

| Locations |  | July | Aug. | Sep |
|-----------|--|------|------|-----|
| Dibrugarh |  |      |      |     |
| Sivasagar |  |      |      |     |
| Jorhat    |  |      |      |     |
| Golaghat  |  |      |      |     |
| Lakhimpur |  |      |      |     |
| Kamrup    |  |      |      |     |
| Goalpara  |  |      |      |     |

|  |         |
|--|---------|
|  | >10 PDI |
|  | <10 PDI |
|  | >5 PDI  |
|  | <1 PDI  |

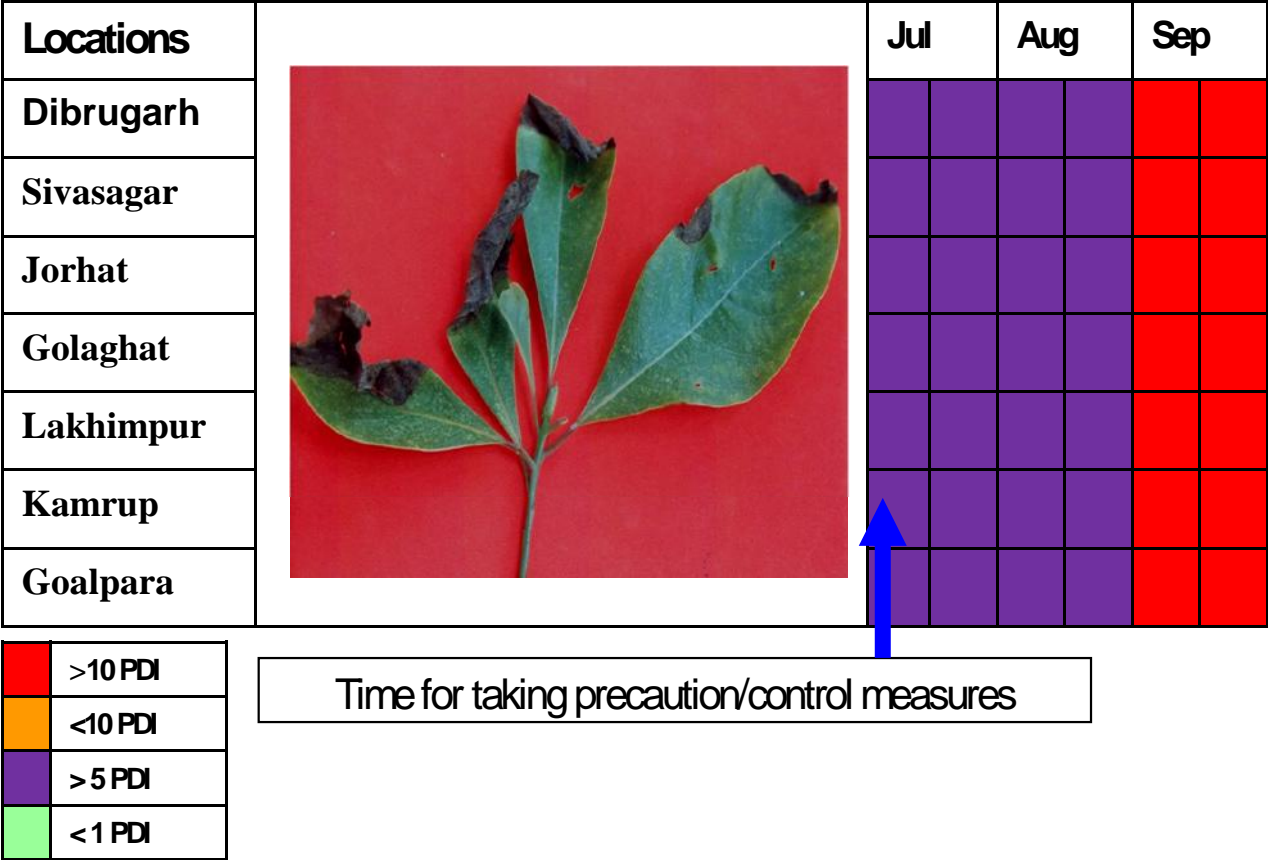
Time for taking precaution/control measures

### CONTROL MEASURES:

**Mechanical control:** Plucking of infected parts and destroyed by burning

**Chemical control:** Application of 0.3% Copper oxychloride (1gm/1lit.) twice at 15 days interval before the peak season of incidence

# Disease calendar for grey blight of som disease



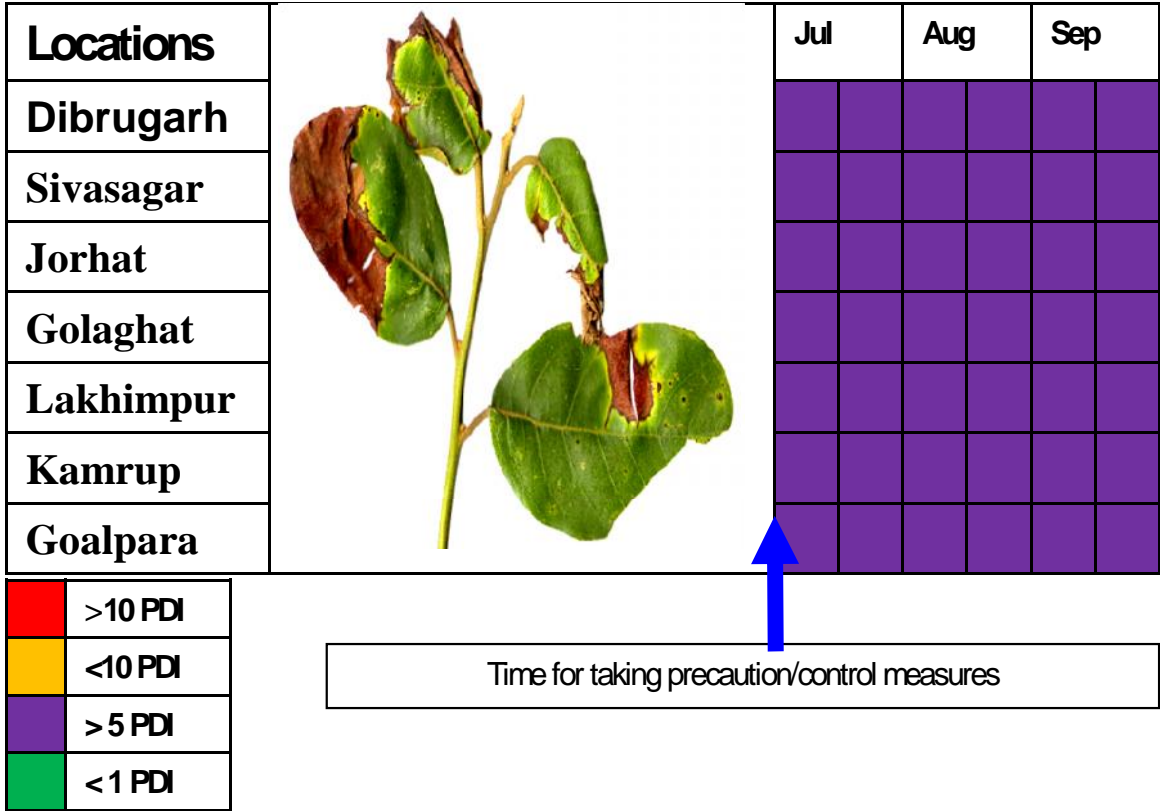
**CONTROL MEASURES:**

**Cultural:** Timely cultural operation, pruning and pollarding.

**Mechanical :** Collection of infected leaves and destruction.

**Chemical:** Spraying of Bavistin @ 0.1% is recommended.

# Disease calendar for brown blight disease of soalu




**CONTROL MEASURES:**

**Mechanical control:** Plucking of infected parts and destroyed by burning the parts helps to destroy the disease pathogen.

**Biological control:** By using *PHYTO-BLIGHTON*.

**Chemical:** Application of Blitox - 50 @ 3gm / liter control the disease.

## Pests calendar for stem borer of som and soalu

| Locations |  | July | Aug | Sep |  |
|-----------|--|------|-----|-----|--|
| Dibrugarh |  |      |     |     |  |
| Sivasagar |  |      |     |     |  |
| Jorhat    |  |      |     |     |  |
| Golaghat  |  |      |     |     |  |
| Lakhimpur |  |      |     |     |  |
| Kamrup    |  |      |     |     |  |
| Goalpara  |  |      |     |     |  |

|  |        |
|--|--------|
|  | >10 PI |
|  | <10 PI |
|  | >5 PI  |
|  | >1 PI  |


Time for taking precaution/control measures

### CONTROL MEASURES:

**Plant extracts :** 5-15% plant extract of Neem, Dotura ,Titabahak and Castor control the infestation.

**Chemical control :** Plugging of borer holes with cotton swab soaked in 1.5% Nuvan followed by mud plastering of the openings.

## Forewarning calendar for flacherie of silkworm

| Locations |  | Jul |  | Aug. |  | Sep |  |  |
|-----------|--|-----|--|------|--|-----|--|--|
| Dibrugarh |  |     |  |      |  |     |  |  |
| Sivasagar |  |     |  |      |  |     |  |  |
| Jorhat    |  |     |  |      |  |     |  |  |
| Golaghat  |  |     |  |      |  |     |  |  |
| Lakhimpur |  |     |  |      |  |     |  |  |
| Kamrup    |  |     |  |      |  |     |  |  |
| Goalpara  |  |     |  |      |  |     |  |  |

|  |        |
|--|--------|
|  | >10 PI |
|  | <10 PI |
|  | <5 PI  |
|  | <1 PI  |

**Control:**

- 1) Properly disinfect the rearing field
- 2) Follow the proper pruning schedule
- 3) Select healthy and disease free eggs
- 4) Provide age specific leaves