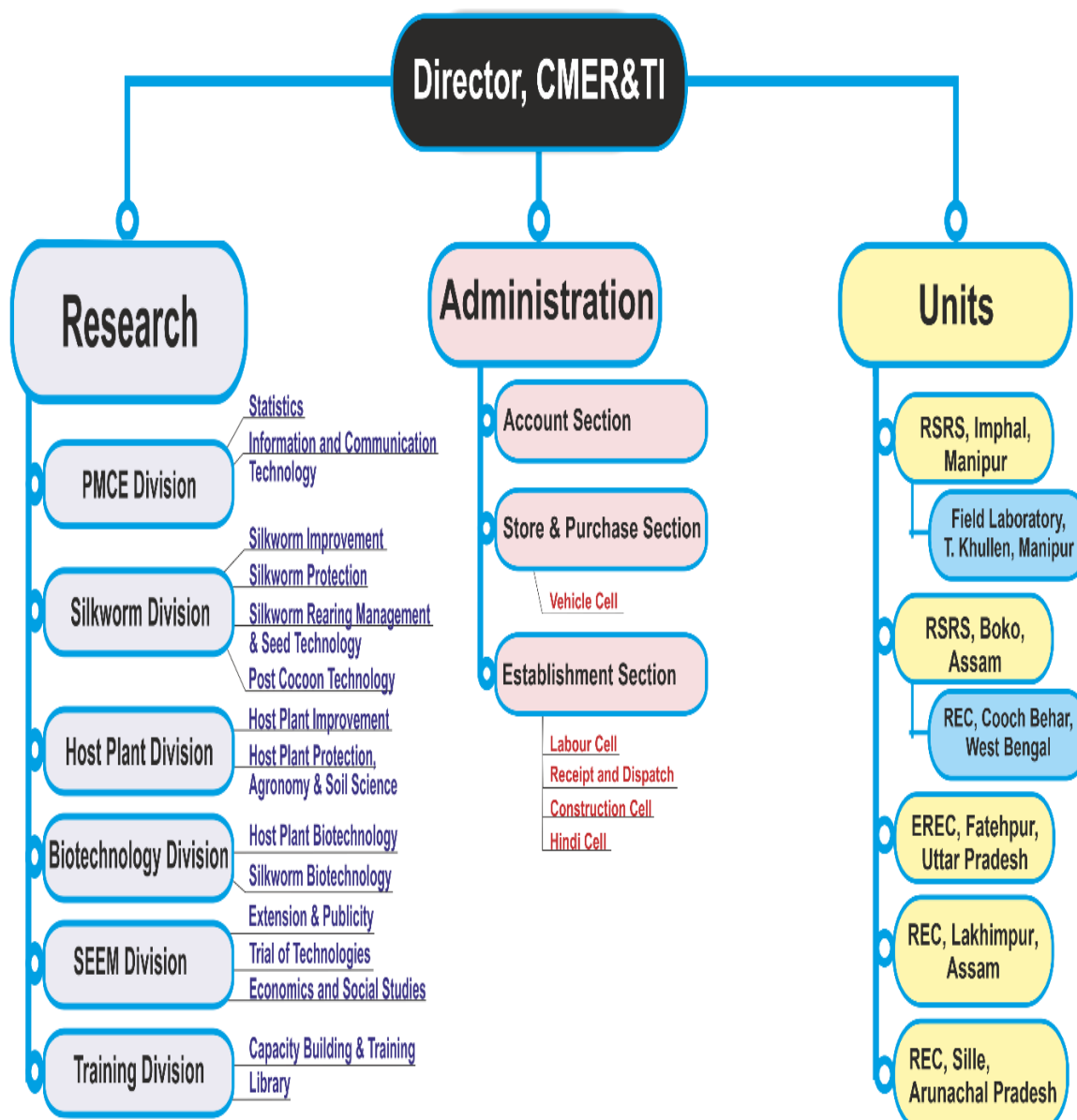


# I) The particulars of its organization, functions and duties

## a) ORGANIZATIONAL SET UP

Central Silk Board (CSB) established Central Muga Eri Research Station at Titabar, Assam in 1972 with a view to provide R&D support for upliftment of Muga & Eri Silk industry in North East India which was later bifurcated into Regional Sericultural Research Station, Titabar ( later shifted to Jorhat during 1986) for Mulberry Research, Regional Eri Research Station at Mendipather, East Garo Hills, (Meghalaya) for Eri Research and Regional Muga Research Station at Boko, Kamrup (Assam) during 1982 for research on Muga. Again during 1987, CSB established a Research and Training Institute named as Central Muga Research & Training Institute at Lahdoigarh, Jorhat. It came into being as a full-fledged Research & Training Institute in 1999 and during the same year, it was renamed as Central Muga Eri Research & Training Institute (CMER&TI) as the apex R&D institute for Muga and Eri and restructured with its nested Regional Research Stations along with Research Extension Centers for Muga and Eri..



## ❖ FUNCTIONS

The Central Muga Eri Research & Training Institute functions under the direct control of the Member Secretary, Central Silk Board, Bangalore. This is the only institute in the country for providing research and developmental support for the growth of Muga and Eri industry. Muga is produced only in N E Region and about 73% of the total production of Eri of the country is produced in the NE Region. Like Mulberry and Tasar culture, a number of problems are associated with Muga, Eri & Oak tasar culture also, which needs to be addressed time to time for increasing productivity. Therefore, developing of package of practices suitable for different climatic conditions for improvement of productivity is the primary function of the main Institute and the subordinate units attached to it.

## ❖ DUTIES:

### CMER&TI, Lahdoigarh Jorhat:

- To draw need based research project in Muga, Eri and Oak Tasar sericulture.
- To provide training to in-service officials of different State Governments, NGOs, Private Farmers, Reelers & Spinners.
- To provide administrative services to employees working in the main Institute and its nested units.
- To coordinate with the Director of Sericulture of North Eastern States and other states for development of sericulture industry.
- To coordinate with different Institutes/ Ministries for implementation of developmental programmes.
- To coordinate extension works.

### RSRS, BOKO, KAMRUP and RSRS, Imphal:

- To formulate need based research projects in Muga, Eri and Oak Tasar culture.
- To impart training to in-service officials of different State Governments, NGOs, Private Farmers and Reelers & Spinners etc.
- To provide administrative services to employees working under RSRS and its nested units.
- Management of sectional activities pertaining to research and extension works.

### RESEARCH EXTENSION CENTRES:

- To provide extension services to the concerned State.
- To validate the technologies developed by the main institute.